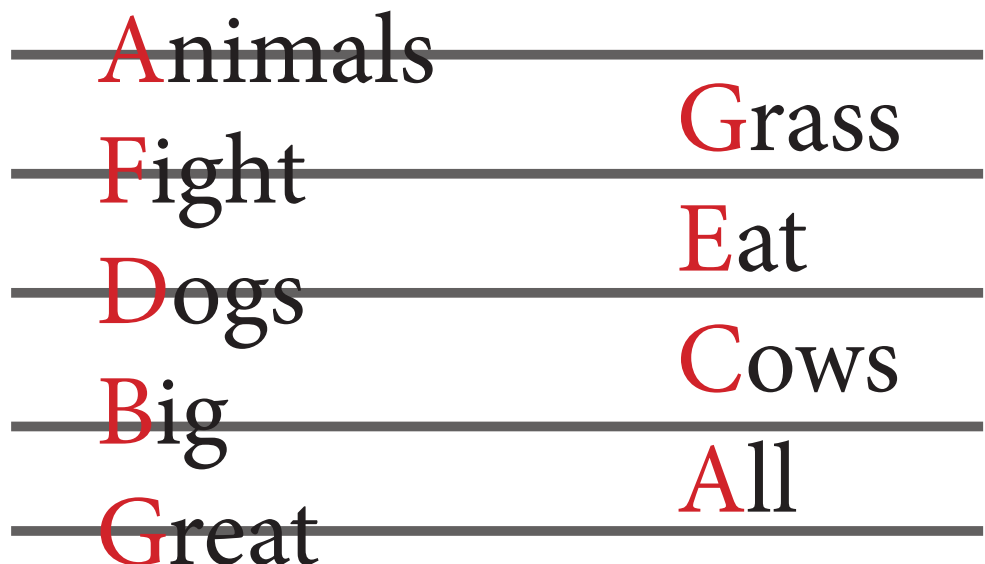
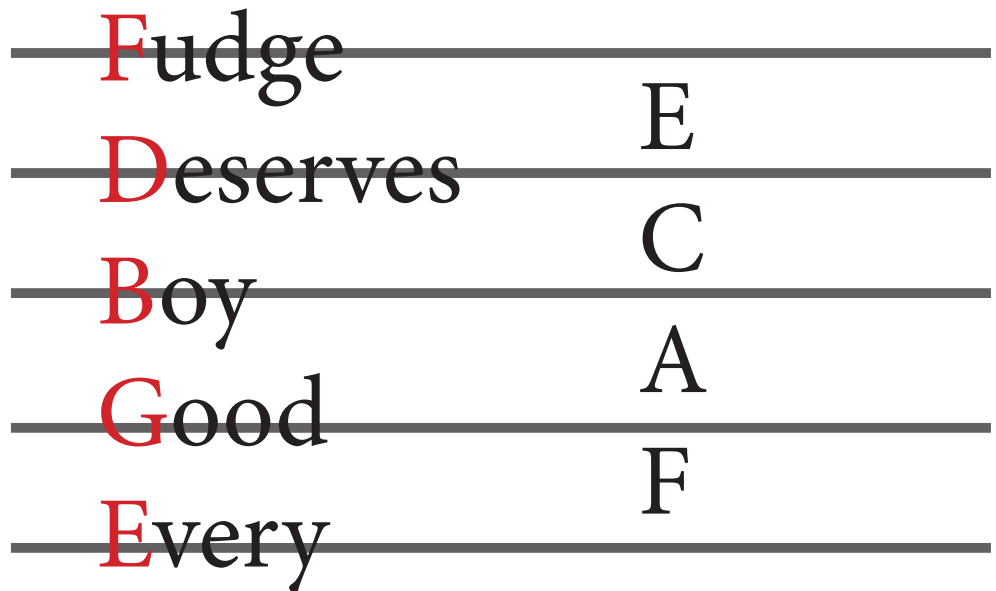


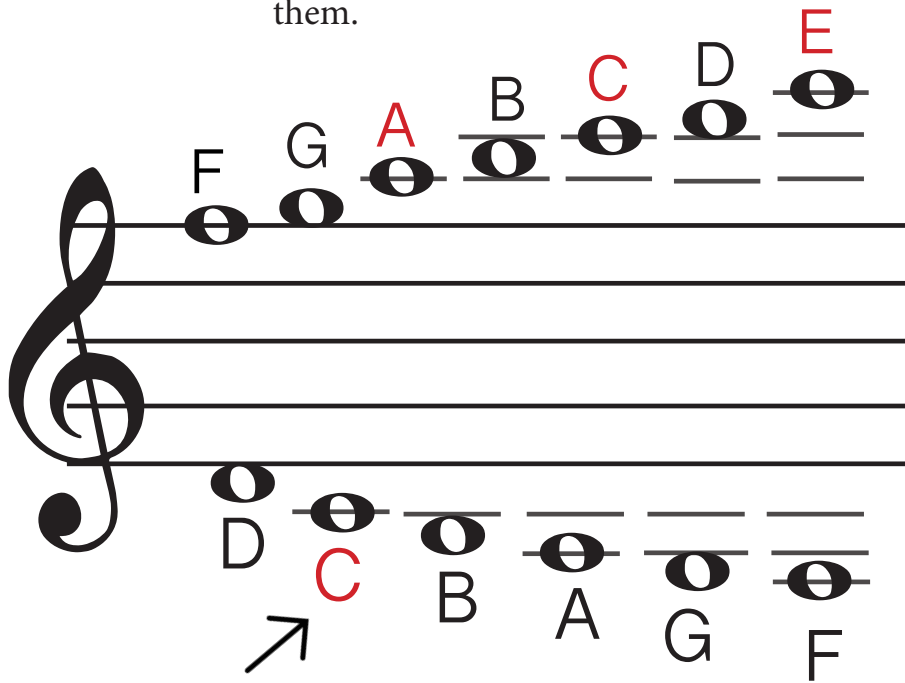
## Notes on the staff

Here is a guide for learning notes on the treble and bass clef.  
Learning notes is all about practice and memorization! The more you  
review the faster you'll memorize.



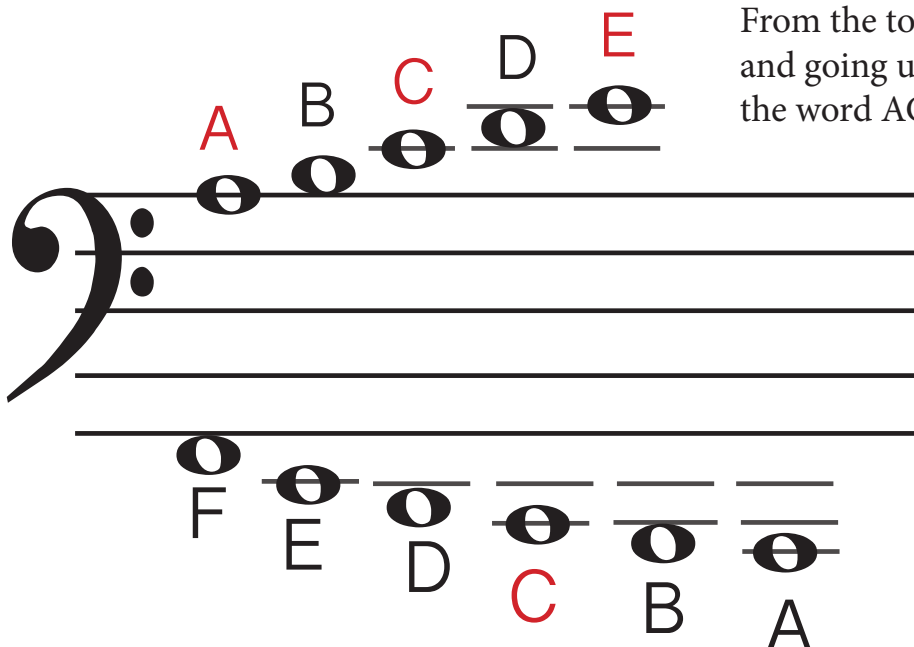
# Ledger lines

Ledger lines are the notes above and below the staff. Here are a few tricks for learning them.



If you start on the ledger line above the staff you can spell the word ACE going up a ledger line each time. If you know the ledger lines then you can go up or down one for the space notes.  
Easy cheesy.

If you know where middle C is then you can count down from there.



From the top line of the base clef and going up a ledger line it spells the word ACE.

Two ledger lines below the base clef is low C. Memorize where this is located to find the other notes.